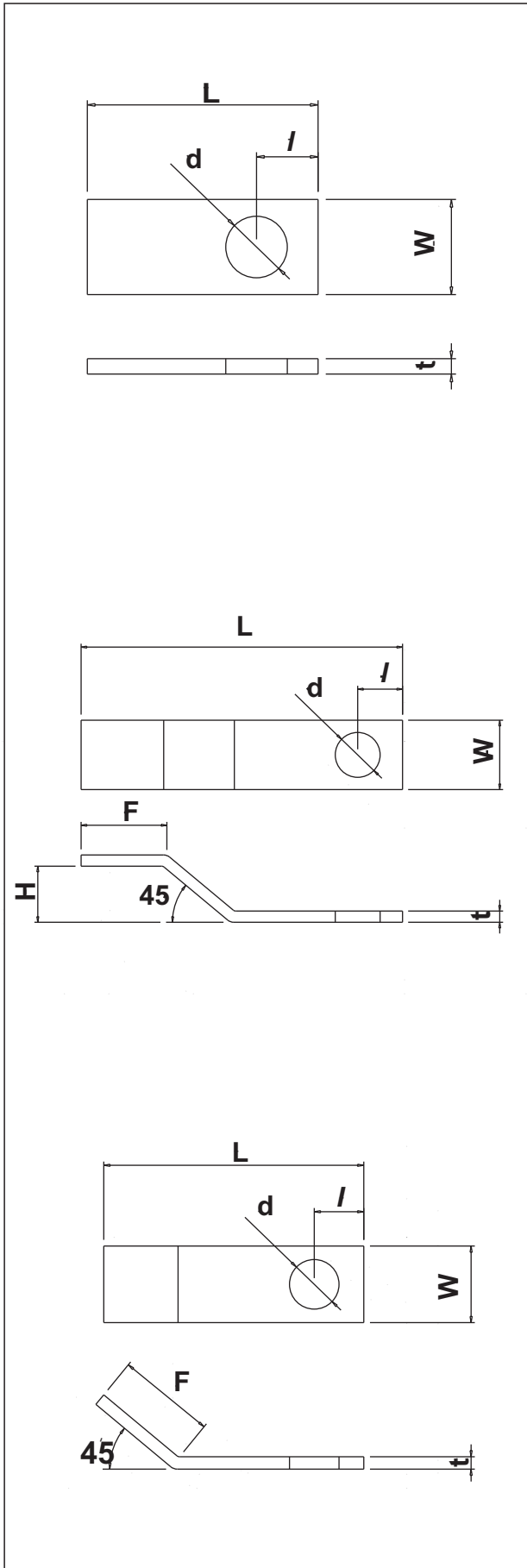
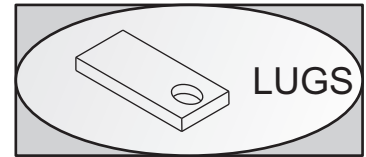


# CU-TECH ThermexWELD exothermic welding



	W	t	L	d	l	H	F
A-101A	20	2	45	10	10	-	-
A-102A	25	2	50	8	10	-	-
A-103A	25	3	50	10	10	-	-
A-104A	25	3	50	12	12	-	-
A-105A	25	4	50	8	10	-	-
A-106A	25	4	50	10	10	-	-
A-107A	25	5	50	12	12	-	-
A-108A	25	5	55	12	12	-	-
A-109A	30	5	55	10	10	-	-
A-110A	30	5	55	12	12	-	-
A-111A	40	5	55	10	10	-	-
A-112A	40	5	55	12	12	-	-
A-113A	50	5	95	10	10	-	-
A-114A	50	5	95	12	12	-	-
A-115A	50	6	95	10	10	-	-
A-116A	50	6	95	12	12	-	-
A-117A	50	8	95	12	12	-	-
A-118A	50	8	95	16	16	-	-

	W	t	L	d	l	H	F
A-101B	20	2	45	10	10	10	25
A-102B	25	2	50	8	10	10	25
A-103B	25	3	50	10	10	10	25
A-104B	25	3	50	12	12	10	25
A-105B	25	4	50	8	10	10	25
A-106B	25	4	50	10	10	10	25
A-107B	25	5	50	12	12	15	25
A-108B	25	5	55	12	12	15	25
A-109B	30	5	55	10	10	15	25
A-110B	30	5	55	12	12	15	25
A-111B	40	5	55	10	10	15	25
A-112B	40	5	55	12	12	15	25
A-113B	50	5	95	10	10	15	45
A-114B	50	5	95	12	12	15	45
A-115B	50	6	95	10	10	15	45
A-116B	50	6	95	12	12	20	45
A-117B	50	8	95	12	12	20	45
A-118B	50	8	95	16	16	20	45

	W	t	L	d	l	H	F
A-101C	20	2	45	10	10	-	30
A-102C	25	2	50	8	10	-	30
A-103C	25	3	50	10	10	-	30
A-104C	25	3	50	12	12	-	30
A-105C	25	4	50	8	10	-	30
A-106C	25	4	50	10	10	-	30
A-107C	25	5	50	12	12	-	30
A-108C	25	5	55	12	12	-	30
A-109C	30	5	55	10	10	-	30
A-110C	30	5	55	12	12	-	30
A-111C	40	5	55	10	10	-	30
A-112C	40	5	55	12	12	-	30
A-113C	50	5	95	10	10	-	55
A-114C	50	5	95	12	12	-	55
A-115C	50	6	95	10	10	-	55
A-116C	50	6	95	12	12	-	55
A-117C	50	8	95	12	12	-	55
A-118C	50	8	95	16	16	-	55